

THE
Camellia
REVIEW

A Publication of the Southern California Camellia Society



C. japonica 'Scensation'

Southern California Camellia Society, Inc.

**An organization devoted to the advancement of the camellia for the benefit of mankind—
physically, mentally and inspirationally.**

OFFICERS —2006-2007

BRADFORD KING, President
BOBBIE BELCHER Secretary/Treasurer, Membership Chairman
BETH STONE, Vice President
BETH STONE, Foreign Membership

DIRECTORS

MELVIN BELCHER
40641 Via Amapola, Murrieta, CA 92562
(951) 304-2507

DAVID MacLAREN
1151 Oxford Road, San Marino, CA 91108
(818)405-2186

SERGIO BRACCI
5567 N. Burton Ave., San Gabriel, CA 91776
(626) 286-4338

FRAN NEUMANN
150 W. Jaxine Drive, Altadena 91001, CA
(616) 797-4251

JOANN BREWER
4166 La Junta, Claremont, CA 91711
(909) 593-3442

LUCIA MARINO PIERPOINT
2271 E. California Boulevard
San Marino, CA 91108
(626) 393-0869

JULIUS CHRISTINSON
3751 Hoover St., Riverside, CA 92504
(909) 688-1547

BETH STONE
1997 Queensberry Rd., Pasadena, CA 91104
(626) 798-4993

ANN FRAGGOS
1524 N. Lowell Avenue
Claremont, CA 91711

LINDA TROYER
3930 Northampton, Claremont, CA 91711
(909) 593-8407

MARILEE GRAY
868 Kent Dr., Claremont, CA 91711
(909) 624-4107

DAVID TRUJILLO
13265 Catalpa, Etiwanda, CA 91739
(909) 899-1650

BRADFORD KING
1530 Marendale Lane, Arcadia, CA 91006
(626)445-8730

WAYNE WALKER
1418 Descanso Drive, LaCanada, CA 91011
(818) 790-7413

AL LATHAM
655 Prospect Crescent, Pasadena, CA 91103
(626) 744-9445

HONORARY LIFE MEMBERS

MEL & BOBBIE BELCHER
COLONEL TOM DURRANT
JULIUS NUCCIO

SERGIO BRACCI
MARILEE GRAY
BERNICE GUNN THOMPSON

FOREIGN REPRESENTATIVES

DENISE DiSALVIA
61 Twynam Street
Narrandera
NSW 2700 AUSTRALIA
bandenis@inet.au

BERNIE STEVENSON
15 Longmynd Drive
Shrewsbury Park
Katikati 306 NEW ZEALAND
bstevenson@xtra.co.nz

THE CAMELLIA REVIEW

Mel Belcher, Editor

Published by the Southern California Camellia Society, Inc. Copyright 2006

Three issues per volume

Send correspondence and manuscripts for publication directly to the Editor. Republication is permitted if credit is given to *The Camellia Review* and the author.

CHANGE OF ADDRESS— Notify the Secretary at once (PLEASE!).

TABLE OF CONTENTS

Vol. 68

January-March, 2007

No. 2

Thanks to our Generous Members3
 Between the Pages, a Book Review, Brad King3
 Announcing a New Book by Dr. William Ackerman4
 Let the Shows Begin5
 Show Results
 Pacific Camellia Society8
 Orange County Camellia Society10
 Southern California Camellia Society, Descanso Gardens12
 San Diego Camellia Society14
 Southern California Camellia Society, Huntington Gardens15
 Pomona Valley Camellia Society17
 The Frontiers of Camellia Hybridizing, Part I, Brad King19
 Growing Camellias on California's North Coast, Dan Charvet22
 2007 Northern California Judges' Symposium, Don Lesmeister24
 Notes and Notables26
 Watering Camellias, J. Carroll Reiners27

COVER PHOTO

C. japonica 'Scensation'

Silvery pink, medium to large, peony form.
Average, compact, upright growth. Fragrant.
Nuccio's 1967

AN INVITATION TO JOIN THE SOUTHERN CALIFORNIA CAMELLIA SOCIETY

The Southern California Camellia Society will welcome you as a member.

Annual membership — \$25.00 Includes subscription to *The Camellia Review* (three issues per year).

New Member	\$25.00	Sponsoring Member	\$50.00
Regular Member	\$25.00	Sustaining Member	\$100.00
		Patron Member	\$150.00

Send payment for dues to the Treasurer/Membership Chairman.

•••••

2006 Camellia Nomenclature with over 150 pages describing more than 4,00 varieties is available at a cost of \$12 per copy mailed to an United States address and \$14 per copy if mailed outside the US. Copies can be ordered by sending a check payable to

Southern California Camellia Society
c/o Bobbie Belcher,
40641 Via Amapola, Murrieta, CA 92562.

THOUGHTS FROM THE EDITOR

“The glory of young men is their strength; gray hair the splendor of the old.” These words expressed in Proverbs 20:29 had special meaning for me last week as I spent four days going up and down a ladder replacing the shade cloth over our camellias. The only thing I would question about that proverb is “the splendor of the old?”

The young fortunately have the capacity to get excited about camellias, add new varieties, increase the size of their gardens and never consider what the future holds. Their plants get larger and, if not curtailed, larger and larger. Whether you have 40 or 400 varieties of small plants, they invariably grow and bring great joy to you and shudders to your competitors. But rather suddenly as the hair grays, you consider the wisdom of what you’ve done. First you fail to keep up with the newer prize-winning varieties. Then you become a little complacent about fertilizing, watering, pruning and disbudding. Then you discover that exhibiting your blooms appears to take more energy than you remember from previous years. So, to compensate, you take fewer blooms to the shows. Then you notice that newer younger members are energetic and, of all things, winning in those categories that you thought you had cornered.

Continuing the thought expressed in the Proverb I hope that, as I get older, my “splendor” is not restricted to gray hair but that I retain the ability to enjoy the competition with the “young men.” After all, I don’t plan to replace the shade cloth for several years and, in the meantime, I hope to enjoy the “splendor” of growing old in the company of “young” men.

—Mel Belcher, Editor

Join Australia and New Zealand Camellia Societies

Australia Society

\$22.00 Single

\$22.00 Family

New Zealand Society

\$22.00 Single

\$25.00 Family

These are U.S. dollars.

Send your check payable to Southern California Camellia Society

c/o Beth Stone

1997 Queensberry Road

Pasadena, California 91104-3351.

THANKS TO OUR GENEROUS MEMBERS

Sponsoring Members

Lew and Annabelle Fetterman

Sustaining Members

Bill and Bev Allman

Travis and Mary James

Alton and Doris LeFebvre

Hideyo Ogawa

Rodger and Vivian Skirvin

G. Stuart Watson



Between the Pages: A Book Review *The Collected Species of the Genus Camellia* *An Illustrated Outline by Gao, Parks and Du Yueqiang* Bradford King Arcadia, California

This 302-page book, published in 2005, is written in English and Chinese. The authors' two stated purposes for writing this beautifully illustrated book are that they wanted to "bridge the gap between scientific studies and the horticultural interest of gardeners" and to provide an illustrated outline of 199 camellia species of the estimated 280 in this genus.

The book is readable for an experienced gardener or for a camellia enthusiast willing to learn some scientific definitions. The technical chapter titled, "Explanation of Botanical Terms" is a helpful four pages of reference material that is needed in order to understand the botanical descriptions provided for each of the species discussed. There were numerous scientific definitions unfamiliar to me and this initially made reading it a challenge. Camellia fruit or sepals were described as "globose" and I learned that "globose" means "spherical in shape." The more familiar I became with the scientific definitions the more readable I found the individual species descriptions. These technical descriptions are more challenging than *Camellia Nomenclature* or Nuccio's Nursery catalog.

The main body of the volume describes 199 camellia species and is arranged in 19 sections based on the classification system developed by Professor Chang. The sections and species are arranged alphabetically. The distribution and botanical characteristics of each specie are reported in succinct (300 words) scientific detail and include some general comments. Most species are illustrated with excellent color photographs visually representing the technical language descriptions.

For example, section "Archemellia" has three wonderful photographs of *C. amplexicaulis*. One 3x4 photograph features two blooms, numerous buds in different developmental stages and a close-up detail of a cluster of leaves. The second photo is a 5x7 close-up of a single bloom with the leaves providing an impressionistic background. The third photo is a 6x7 of a wide-open bloom and a second partially opened flower with 8 leaves that visually demonstrate the characteristic elliptic and oblong-elliptical shaped leaves with serrated edges.

The combination of technical language and outstanding photographs brings each species to life whether the

reader is a cognitive or visual learner. The written text also has appeal to camellia lovers with a technical and scientific bent who are interested in collecting or hybridizing camellias. As the authors proposed, the book bridges the gap between science and gardening. In addition, the aesthetic beauty of the volume is outstanding. The high quality glossy paper helps to showcase the extensive color photography making every page a visual and informative pleasure. For example, the picture of *C nitidissima* in the Chinese language section of the

second forward shows two bright yellow cup blooms with their typical waxy texture and dark golden stamens against a background of dark green leaves with patches of white.

While this book is much more than a "coffee table" illustration of camellia species, it is visually in the same league as the best of this genre. Whether the reader is a visual learner, a lover of flower photography or a serious camellia grower, this illustrated volume will provide years of enjoyment "between the pages."



ANNOUNCING A NEW BOOK BY DR. WILLIAM L. ACKERMAN

Beyond the Camellia Belt: Breeding, Propagating and Growing Cold-Hardy Camellias will be released by the time you receive this Review. Gardeners seeking to adorn landscapes in more northerly climates with delicate camellia blossoms will learn how to in this comprehensive guide. Following a brief history of the genus camellia and the breeding process which has enabled strains to survive in colder climates, this guide outlines the steps to success—from siting, planting and fertilizing to pruning, propagating and controlling pests and diseases. Besides offering a wealth of time-tested advice—from one

who for more than 40 years has mounted extensive research in the cultivation of camellias suitable for areas outside of their natural habitat and has had a type of camellia named after him—this handbook provides a list of camellia varieties that will thrive in zones five and six, as well as appendices identifying camellia societies, nursery sources, collections and suggested readings.

Editor's note: We have appreciated the work that Dr. Ackerman has done identifying cold-hearty cultivars and feel this information should be of interest.

CAMELLIA STATIONERY

Our beautiful camellia notecards are still available in sets of eight for \$6.00 including tax and shipping. Folks who use them and re-order tell us how truly lovely they are. They make wonderful gifts for your fellow camellia lovers or those you are trying to get interested in this great hobby! You can even order them for your own use. They also look beautiful in frames. Cards can be ordered through Dorothy Grier, 13229 Pipeline Avenue, Chino, CA 91710 (909) 628-1380. Make your check payable to SCCS.

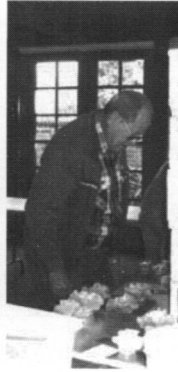
If any camellia society would like to use these cards as fund raisers, orders for 25 or more sets are priced at \$5.00 each, including tax and shipping.

LET THE SHOWS BEGIN!

Step 1 —Getting the blooms ready



Marilee Gray prepares the many blooms she brought.



Marvin Belcher gets his blooms ready



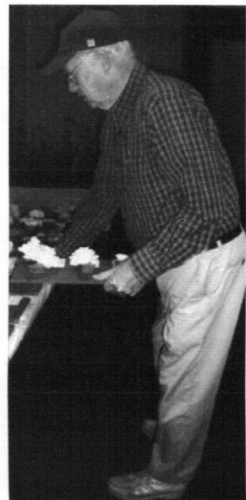
Brad King organizes his winning blooms.



Linda Tunner and George Harrison get blooms ready while Don Gray watches to make sure they are doing it correctly.

Step 2—Getting the blooms placed for judging

Les Brewer carefully places the blooms to get the judges' attention.



Step 3 —The final instructions.



Linda Troyer instructs the clerks before the judging begins. (Notice that shorter clerk in the back row.)

Ralph Shafer gives the judges their instructions and assignments.



In Southern California we train our clerks while they are young! Emma Fagundo has quickly become everyone's favorite clerk.



Emma won with her very own 'Hot Stuff' at the Pomona Valley Camellia Show! (see p. 19)

The Final Step—The winners



These two **VERY SPECIAL** people make our shows work smoothly—



Dorothy Christinson not only brings coffee and doughnuts for the exhibitors, but she also does ALL the paper work including show schedules, signs for the tables, ballots and ballot “bags,” tally sheets, etc. She also makes sure there are plenty of sharpened pencils for the voting. Then she makes sure the show results get to the Editor for inclusion in *The Review*.

Ralph Shafer, was Chairman of Judges at the camellia shows from San Diego to Bakersfield. He also makes sure everything works smoothly during and after the show.



**MANY THANKS
DOROTHY AND RALPH
from
the rest of us.**

PACIFIC CAMELLIA SOCIETY

Descanso Gardens,

January 13 and 14, 2007

Japonica—Large/Very Large

Best Single	'Katie'	Joe & Linda Tunner
Runner-up Single	'Guilio Nuccio'	Helen Maas
Court of Honor Single	'Swan Lake'	Tom & Dody Gilfoy
Best Tray of 3	'Dody's Delight'	Tom & Dody Gilfoy
Runner-up Tray of 3	'Moonlight Bay'	Tom & Dody Gilfoy
Court of Honor Tray of 3	'Henry E. Huntington'	Tom & Dody Gilfoy

Special Culture

Best Single	'Junior Prom'	Brad & Lynn King
Runner-up Single	'Just Sue'	James Fitzpatrick
Court of Honor Single	'Grand Prix'	Brad & Lynn King
Best Tray of 3	'Grand Prix'	Brad & Lynn King
Runner-up Tray of 3	'Kramer's Supreme'	Don & Marilee Gray
Court of Honor Tray of 3	'Kramer's Supreme'	Don & Marilee Gray
Court of Honor Tray of 3	'Mathotiana'	Brad & Lynn King

Japonica—Medium

Best Single	'Firedance'	Tom & Dody Gilfoy
Runner-up Single	'Flame'	Eugene & Elynor Baughman
Court of Honor Single	'Tama Americana'	Brad & Lynn King
Best Tray of 3	'Grand Marshal'	Tom & Dody Gilfoy
Runner-up Tray of 3	'Debutante'	Dale & Mary Kay Mittag
Court of Honor Tray of 3	'Ruby's Magnoliaeflora'	Les & JoAnn Brewer

Special Culture

Best Single	'Betty Foy Sanders'	Brad & Lynn King
Runner-up Single	'Nuccio's Carousel'	Don & Marilee Gray
Court of Honor Single	'Black Magic'	Don & Marilee Gray
Best Tray of 3	'Herme'	Brad & Lynn King
Runner-up Tray of 3	'Nuccio's Carousel'	Brad & Lynn King
Court of Honor Tray of 3	'Nuccio's Pearl'	Brad & Lynn King

Japonica—Miniature or Small

Best Single	'Demi-Tasse'	Julius & Dorothy Christinson
Runner-up Single	'Little Bo Peep'	Tom & Dody Gilfoy
Court of Honor Single	'Tom Thumb'	Don & Marilee Gray
Best Tray of 3	'Red Hots'	Jac Fagundo
Runner-up Tray of 3	'Ave Maria'	Don & Marilee Gray
Court of Honor Tray of 3	'Maroon and Gold'	Tom & Dody Gilfoy

Special Culture

Best Single	'Dahlohnega'	Brad & Lynn King
Runner-up Single	'Kewpie Doll'	Don & Mary Bergamini
Court of Honor Single	'Sunny Side'	Don & Marilee Gray
Best Tray of 3	'Maroon and Gold'	Brad & Lynn King
Runner-up Tray of 3	'Dahlohnega'	Brad & Lynn King
Court of Honor Tray of 3	'Takanini'	Don & Mary Bergamini

Reticulata or Reticulata Hybrid

Best Single	'Valentine Day'	Dean Turney
Runner-up Single	'Valentine Day Var.'	Dean Turney
Court of Honor Single	'Sean Armijo Var.'	Rudy Blanco
Best Tray of 3	'Sean Armijo Var.'	Rudy Blanco
Runner-up Tray of 3	'Francie L.'	Eugene Snooks
Court of Honor Tray of 3	'Valley Knudsen'	Joe & Linda Tunner

Special Culture

Best Single	'Miss Tulare'	Jac Fagundo
Runner-up Single	'Frank Houser'	Don & Marilee Gray
Court of Honor Single	'Frank Houser Var.'	Don & Marilee Gray

Non-Reticulata Hybrid

Best Single	'Super Star'	Tom & Dody Gilfoy
Runner-up Single	'Waltz Time Var.'	Dale & Mary Kay Mittag
Court of Honor Single	'Joe Nuccio'	Stephen & Anne Dashiell
Best Tray of 3	'Super Star'	Tom & Dody Gilfoy
Runner-up Tray of 3	'Cupcake'	Victor & Linda Rodriguez
Court of Honor Tray of 3	'Waltz Time Var.'	Tom & Dody Gilfoy

Special Culture

Best Single	'Nicky Crisp'	Don & Marilee Gray
Runner-up Single	'Island Sunset'	Brad & Lynn King
Court of Honor Single	'Buttons 'n Bows'	Don & Marilee Gray

Species (Open)

Best Single	'Egao'	Brad & Lynn King
Runner-up Single	'Grady's Egao'	Don & Marilee Gray
Court of Honor Single	'Shibori Egao'	Don & Mary Bergamini
Best Tray of 3	'Shibori Egao'	Brad & Lynn King
Runner-up Tray of 3	'Dwarf Shishi'	Don & Marilee Gray
Court of Honor Tray of 3	'Egao'	Brad & Lynn King

Collector's Tray of 3 Mixed Varieties

Best Tray	'Grand Slam', 'Wildfire', 'Freedom Bell'	Brad & Lynn King
Runner-up Tray	'Tata', 'Silver Waves', 'Man Size'	Don & Marilee Gray
Court of Honor Tray	'Dody's Delight', 'Waltz Time Var.', 'Trinket'	Tom & Dody Gilfoy Don & Marilee Gray

Best Tray of 6 Different Blooms**Old Timers Blooms**

Best	'Magnoliaeflora'	Brad & Lynn King
Runner-up	'Herme'	Jim & Armida Wilkin
Court of Honor	'Mathotiana'	Brad & Lynn King

Best Seedling**Novice**

Best bloom 4 inches or larger	'Mathotiana'	Mon Rose
Best bloom under 4 inches	'Daikagura'	Dang Pham
Runner-up bloom under 4 inches	'Debutante'	Hong-M. Cai
Court of Honor bloom under 4 inches		Dang Pham

Award of Merit

Brad & Lynn King

•••••

Gardening requires lots of water—most of it in the
form of perspiration
—Lou Erickson

What a man needs in gardening is a cast-iron back
with a hinge in it.
—Charles Dudley Warner

Gardening is a matter of your enthusiasm holding up
until your back gets used to it.
—Author unknown

ORANGE COUNTY CAMELLIA SOCIETY
7th Annual Show, Rogers Garden
January 20-21, 2007

Japonica—Large/Very Large

Best Single	'Carter's Sunburst'	Victor & Linda Rodriguez
Runner-up Single	'Han Ling Snow'	Les & JoAnn Brewer
Court of Honor Single	'Royal Velvet'	Jac Fagundo
Best Tray of 3	'Han Ling Snow'	Les & JoAnn Brewer
Runner-up Tray of 3	'Tata'	Julius & Dorothy Christinson
Court of Honor Tray of 3	'Grand Prix'	Joe & Linda Tunner

Special Culture

Best Single	'Carter's Sunburst'	Brad & Lynn King
Runner-up Single	'Royal Velvet'	Don & Marilee Gray
Court of Honor Single	'Grand Prix'	Brad & Lynn King
Best Tray of 3	'Katie'	Brad & Lynn King

Japonica—Medium

Best Single	'Betty Foy Sanders'	George & Karen Harrison
Runner-up Single	Margaret Davis'	Jac Fagundo
Court of Honor Single	'Nuccio's Carousel'	Don & Marilee Gray
Best Tray of 3	'Betty Foy Sanders'	Joe & Linda Tunner
Runner-up Tray of 3	'Firedance Var.'	Dale & Mary Kay Mittag
Court of Honor Tray of 3	'Rudy's Magnoliaeflora'	Les & JoAnn Brewer

Special Culture

Best Single	'Herme'	Brad & Lynn King
Runner-up Single	'Nuccio's Carousel'	Brad & Lynn King
Court of Honor Single	'Black Magic'	Don & Marilee Gray
Best Tray of 3	'Glen 40 Variegated'	Brad & Lynn King
Runner-up Tray of 3	'Nuccio's Carousel'	Brad & Lynn King
Court of Honor	'Nuccio's Pearl'	Brad & Lynn King

Japonica—Small

Best Single	'Red Hots'	Les & JoAnn Brewer
Runner-up Single	'Pink Perfection'	Bob & Mary Sheriff
Court of Honor Single	'Tama Peacock'	Beth Stone

Special Culture

Best Single	'Sunny Side'	Don & Marilee Gray
Runner-up Single	'Maroon and Gold'	Brad & Lynn King

Japonica—Miniature

Best Single	'Little Slam'	Les & JoAnn Brewer
Runner-up Single	'Lemon Drop'	Eugene Snooks
Court of Honor	'Little Slam Var.'	Julius & Dorothy Christinson

Japonica—Small/Miniature

Best Tray of 3	'Red Hots'	Don & Marilee Gray
Runner-up Tray of 3	'Lipstick'	Les & JoAnn Brewer
Court of Honor Tray of 3	'Tama Peacock'	Brad & Lynn King

Special Culture

Best Tray of 3	'Maroon and Gold'	Brad & Lynn King
Runner-up Tray of 3	'Red Hots'	Don & Marilee Gray

Reticulata or Reticulata Hybrid

Best Single	'Valentine Day'	Michael Mathos
Runner-up Single	'Frank Houser'	George & Karen Harrison
Court of Honor Single	'Queen Bee'	Michael Mathos
Best Tray of 3	'Frank Houser Var.'	Steve & Nancy Mefford
Runner-up Tray of 3	'Sean Armijo Var.'	Rudy Blanco
Court of Honor Tray of 3	'Valley Knudsen'	Joe & Linda Tunner

Special Culture		
Best Single	'Frank Houser'	Don & Marilee Gray
Runner-up Single	'Frank Houser Var.'	Don & Marilee King
Court of Honor	'Fiesta Grande'	Don & Marilee King
Non-Reticulata Hybrid		
Best Single	'Joe Nuccio'	Steve & Nancy Mefford
Runner-up Single	'Debbie'	Don & Marilee Gray
Court of Honor Single	'Demure'	Joe & Linda Tunner
Best Tray of 3	'Waltz Time Var.'	Dale & Mary Kay Mittag
Runner-up Tray of 3	'Cupcake'	Victor & Linda Rodriguez
Court of Honor	'Coral Bouquet'	Steve & Nancy Mefford
Special Culture		
Best Single	'Little Michael'	Don & Marilee Gray
Runner-up Single	'Buttons ' N Bows'	Don & Marilee Gray
Court of Honor Single	'Nicky Crisp'	Don & Marilee Gray
Best Tray of 3	'Nicky Crisp'	Don & Marilee Gray
Species		
Best Single	'Shibori Egao'	Steve & Nancy Mefford
Runner-up Single	'Grady's Egao'	Don & Marilee Gray
Court of Honor Single	'Super Star'	Victor & Linda Rodriguez
Best Tray of 3	'Star Above Star'	Brad & Lynn King
Runner-up Tray of 3	'Dazzler'	Brad & Lynn King
Court of Honor Tray of 3	'Shishi-Gashira'	Brad & Lynn King
Collector's Tray of 3 Mixed Varieties		
Best Tray	'Fashionata', 'Egao', 'Little Michael'	Les & JoAnn Brewer
Runner-up Tray	'Katie Var.', Margaret Davis', 'Spring Daze'	Brad & Lynn King
Court of Honor Tray	'Snow Chan', 'Firedance Var.', 'Red Hots'	Don & Marilee Gray Rudy Blanco
Best Seedling		
Best Fragrant Bloom		
	'High Fragrance'	George & Karen Harrison
Old Timers Bloom		
Best	'Magnoliaeflora'	Beth Stone
Runner-up	'Debutante'	George & Karen Harrison
Court of Honor	'C. M. Hovey'	Joe & Linda Tunner
Novice		
Best Single	'C. M. Wilson'	Dolores Wolfe
Runner-up Single	'Silver Waves'	Peggy Rushing
Court of Honor	'Bob Hope'	Rodger Skirvin
Intermediate		
Best Single	'Carter's Sunburst'	Mary Romeo
Runner-up Single	'Crimson Candles'	Mary Romeo



Despite the gardener's best intentions,
Nature will improvise.
—Michael P. Garafalo

Many things grow in the garden that were never sown there.
—Thomas Fuller, *Gnomologia*, 1731

Earth is here so kind, that just tickle her with a hoe and she
laughs with a harvest.
—Douglas William Jerrold

SOUTHERN CALIFORNIA CAMELLIA SOCIETY

59th Annual Show

Descanso Gardens, January 27-28, 2007

Japonica—Large/Very Large

Best Single	'Elizabeth Weaver'	Tom & Dody Gilfoy
Runner-up Single	'Showtime'	Victor & Linda Rodriguez
Court of Honor Single	'Swan Lake'	Tom & Dody Gilfoy
Best Tray of 3	'Tata'	Linda Tunner
Runner-up Tray of 3	'Silver Lace'	James Fitzpatrick
Court of Honor Tray of 3	'Grand Prix'	Fran Neumann

Special Culture

Best Single	'Miss Charleston Var.'	Don & Marilee Gray
Runner-up Single	'Showtime'	Jac Fagundo
Court of Honor Single	'Elegans Supreme'	Mel & Bobbie Belcher
Best Tray of 3	'Elegans Splendor'	Don & Marilee Gray
Runner-up Tray of 3	'Mathotiana Supreme'	Don & Marilee Gray
Court of Honor Tray of 3	'Elegans Var.'	Don & Marilee Gray

Japonica—Medium

Best Single	'Nuccio's Gem'	Linda Troyer
Runner-up Single	'Margaret Davis'	Jac Fagundo
Court of Honor Single	'Wildfire'	Mel & Bobbie Belcher
Best Tray of 3	'Firedance Var.'	Dale & Mary Kay Mittag
Runner-up Tray of 3	'Rudy's Magnoliaeflora'	Les & JoAnn Brewer
Court of Honor Tray of 3	'Magnoliaeflora'	Beth Stone

Special Culture

Best Single	'Fred Sanders Var.'	Don & Marilee Gray
Runner-up Single	'Mrs. George Bell'	Mel & Bobbie Belcher
Court of Honor Single	'Nuccio's Carousel'	James Fitzpatrick
Best Tray of 3	'Black Magic'	Don & Marilee Gray

Japonica—Small

Best Single	'Red Hots'	Jac Fagundo
Runner-up Single	'Ave Maria'	Mel & Bobbie Belcher
Court of Honor Single	'Demi-Tasse'	Julius & Dorothy Christinson

Special Culture

Best Single	'Red Hots'	James Fitzpatrick
-------------	------------	-------------------

Japonica—Miniature

Best Single	'Something Beautiful'	Tom & Dody Gilfoy
Runner-up Single	'Little Red Riding Hood'	Tom & Dody Gilfoy
Court of Honor Single	'Grace Albritton'	Mel & Bobbie Belcher

Special Culture

Best Single	'Lemon Drop'	Don & Marilee Gray
Runner-up Single	'Little Michael'	Don & Marilee Gray
Court of Honor Single	'Papoose'	Mel & Bobbie Belcher

Japonica—Small or Miniature

Best Tray of 3	'Tama Peacock'	George & Karen Harrison
Runner-up Tray of 3	'Red Hots'	Tom & Dody Gilfoy
Court of Honor Tray of 3	'Maroon and Gold'	Tom & Dody Gilfoy

Special Culture

Best Tray of 3	'Red Hots'	James Fitzpatrick
----------------	------------	-------------------

Reticulata or Reticulata Hybrid

Best Single	'Frank Houser Var.'	Jac Fagundo
Runner-up Single	'Frank Houser'	Jac Fagundo

Court of Honor Single	'Sean Armijo Var.'	Rudy Blanco
Best Tray of 3	'Valley Knudsen'	Linda Tunner
Runner-up Tray of 3	'Fiesta Grande'	Rudy Blanco
Court of Honor Tray of 3	'Sean Armijo Var.'	Rudy Blanco
Special Culture		
Best Single	'Frank Houser'	Don & Marilee Gray
Runner-up Single	'Frank Houser Var.'	Don & Marilee Gray
Court of Honor Tray	'Early Crimson'	Mel & Bobbie Belcher
Non-Reticulata Hybrid		
Best Single	'Waltz Time Var.'	Dale & Mary Kay Mittag
Runner-up Single	'Super Star'	Tom & Dody Gilfoy
Court of Honor Single	'Coral Delight Var.'	George & Karen Harrison
Best Tray of 3	'Waltz Time Var.'	Dale & Mary Kay Mittag
Runner-up Tray of 3	'Paper Dolls'	Dale & Mary Kay Mittag
Court of Honor Tray of 3	'Jury's Yellow'	Linda Tunner
Special Culture		
Best Single	'Coral Delight Var.'	Don & Marilee Gray
Runner-up Single	'E. G. Waterhouse'	Don & Marilee Gray
Best Tray of 3	'Nicky Crisp'	Don & Marilee Gray
Runner-up Tray of 3	'High Fragrance'	Don & Marilee Gray
Species		
Best Single	'Grady's Egao'	Don & Marilee Gray
Runner-up Single	'Kiko'	Joe & Linda Tunner
Court of Honor Single	'Yuletide'	Dale & Mary Kay Mittag
Best Tray of 3	'Shibori Egao'	Les & JoAnn Brewer
Runner-up Tray of 3	'Egao'	Les & JoAnn Brewer
Old Timers Bloom		
Best	'Herme'	Beth Stone
Runner-up	'Lady Vansittart Pink'	Jim & Dorothy McQuiston
Court of Honor	'Debutante'	Libby Lent
Collector's Tray of 3 Mixed Varieties		
Best Tray	'Frank Houser Var.' Haru-No-Utena', 'Coral Delight'	George & Karen Harrison
Runner-up	'Fashionata', 'Rudy's Magnoliaeflora', 'Kewpie Doll'	Les & JoAnn Brewer
Court of Honor	'Fashionata', 'Mrs. George Bell', 'Little Michael'	Les & JoAnn Brewer Rudy Blanco
Best Seedling		
Novice—Large/Very Large		
Best	'Spellbound'	W. M. Lynn
Runner-up	'C. M. Wilson'	W. M. Lynn
Court of Honor	'Silver Waves'	Peggy Rushing
Novice—Medium, Miniature or Small		
Best	'Glen 40'	W. M. Lynn
Runner-up	'Egao'	W. M. Lynn
Court of Honor	'Magnoliaeflora'	W. M. Lynn
Intermediate—Large/Very Large		
Best	'Elegans Supreme'	Dang Pham
Runner-up	'Elegans Var.'	Hong Mi Can
Court of Honor	'Daikagura'	Dang Pham
Intermediate—Medium, Miniature or Small		
Best	'Debutante'	Hong Mi Cai
Runner-up	'Ave Maria'	Jason Flick
Court of Honor	'Covina'	Dang Pham

SAN DIEGO CAMELLIA SOCIETY
59th Annual Camellia Show
February 3 and 4, 2007

Japonica—Large/Very Large

Best Single	'Carter's Sunburst'	Joanna & Lew Gary
Runner-up Single	'Chow's Han Ling'	Les & JoAnn Brewer
Court of Honor Single	'Guilio Nuccio Var.'	Victor & Linda Rodriguez
Best Tray of 3	"Tata"	Les & JoAnn Brewer
Runner-up Tray of 3	'Kramer's Sup.'	Victor & Linda Rodriguez
Court of Honor Tray of 3	'Mathotiana'	Larry & Diane Perry

Japonica—Medium

Best Single	'Silver Tower'	Don & Marilee Gray
Runner-up Single	'Nuccio's Cameo'	Don & Martha Beckman
Court of Honor Single	'Elaine's Betty'	Don & Marilee Gray
Best Tray of 3	'Nuccio's Carousel'	James Fitzpatrick
Runner-up Tray of 3	'Margaret Davis'	James Fitzpatrick
Court of Honor Tray of 3	'Grand Marshal'	Les & JoAnn Brewer

Japonica—Small

Best Single	'Red Hots'	Don & Marilee Gray
Runner-up Single	'Maroon and Gold'	Mel & Bobbie Belcher
Court of Honor Single	'Tama Peacock'	Les & JoAnn Brewer
Best Tray of 3	'Red Hots'	Don & Marilee Gray
Runner-up Tray of 3	'Demi-Tasse'	Julius & Dorothy Christinson
Court of Honor Tray of 3	'Maroon and Gold'	Sharon Lee

Japonica—Miniature

Best Single	'Little Michael'	Mel & Bobbie Belcher
Runner-up Single	'Ave Maria'	Mel & Bobbie Belcher
Court of Honor Single	'Lemon Drop'	Don & Marilee Gray
Best Tray of 3	'Men's Mini'	Julius & Dorothy Christinson

Japonica—Special Culture

Best	'Elegans Champagne'	Mel & Bobbie Belcher
Runner-up	'Prima Ballerina'	Don & Marilee Gray
Court of Honor	'Mathotiana Supreme'	Don & Marilee Gray

Reticulata or Reticulata Hybrid

Best Single	'Valentine Day'	Michael Mathos
Runner-up Single	'Frank Houser'	Les & JoAnn Brewer
Court of Honor Single	'Frank Houser Var.'	Victor & Linda Rodriguez
Best Tray of 3	'Frank Houser'	Mel & Bobbie Belcher
Runner-up Tray of 3	'Royalty'	Dean Turney
Court of Honor Tray	'Moonrise'	Don & Marilee Gray

Special Culture

Best	'Frank Houser'	Don & Marilee Gray
Runner-up	'Dr. Clifford Parks'	Mel & Bobbie Belcher
Court of Honor	'Frank Houser Var.'	Mel & Bobbie Belcher

Non-Reticulata Hybrid

Best Single	'Hot Stuff'	E. C. Snooks
Runner-up Single	'Debbie'	Les & JoAnn Brewer
Court of Honor	'Nicky Crisp'	Steve & Nancy Mefford
Best Tray of 3	'Lucky Star'	Sharon Lee
Runner-up Tray of 3	'Buttons 'n Bows'	Don & Marilee Gray

Special Culture

Best	'Coral Delight Var.'	Don & Marilee Gray
Runner-up	'E. G. Waterhouse'	Don & Marilee Gray
Court of Honor	'Nicky Crisp'	Don & Marilee Gray

Species		
Best Single	'Egao'	Les & JoAnn Brewer
Runner-up Single	'Yuletide'	E. C. Snooks
Court of Honor Single	'Shishi-Gashira'	Don & Marilee Gray
Collector's Tray of 3 Mixed Varieties		
Best	'Tata', 'Nuccio's Gem', 'Lemon Drop'	Don & Marilee Gray
Runner-up	'Fashionata', 'Mrs. George Bell', 'Ave Maria'	Les & JoAnn Brewer
Court of Honor	'Fashionata', 'Rudy's Magnoliaeflora', 'Little Michael'	Les & JoAnn Brewer
Best Fragrant	'Minato-No-Akebono'	Joanna & Lew Gary
Best 1-2 year old Grafted Plant	'Lucky Star'	James Fitzpatrick
Best Camellia Plant in Bloom	'Coral Delight'	Sharon Lee
Blooms grown in San Diego County		
Best	'Queen Bee'	Michael Mathos
Runner-up	'Katie'	Sharon Lee
Court of Honor	'Cornelian'	Michael Mathos
Novice		
Best	'Showa-No-Sakae'	Alan Greenspan
Runner-up	'Maroon and Gold'	Alan Greenspan
Court of Honor	'Herme'	Judy Monahan
Intermediate		
Best	'C. M. Wilson'	Sandy Findling
Runner-up	'Little Slam'	Sean Buckner
Court of Honor	'Guilio Nuccio Var.'	Don & Martha Beckman

. . .

SOUTHERN CALIFORNIA CAMELLIA SOCIETY
35th Annual Camellia Show
Huntington Gardens, February 10 and 11, 2007

Japonica—Large/Very Large

Best Single	'Katie'	Joe & Linda Turner
Runner-up Single	'Guilio Nuccio Var.'	Tom & Dody Gilfoy
Court of Honor Single	'Royal Velvet'	Jac Fagundo
Best Tray of 3	'Elegans Chandler'	Gene & Elynor Baughman
Runner-up Tray of 3	'Mrs. D. W. Davis'	Tom & Dody Gilfoy
Court of Honor Tray of 3	'Dody's Delight'	Tom & Dody Gilfoy
Best Tray of 5	'Royal Velvet'	Todd & Lindsey Brewer
Runner-up Tray of 5	'Cloisonne'	Tom & Dody Gilfoy
Court of Honor Tray of 5	'Snow Chan'	Joe & Linda Turner

Japonica—Medium

Best Single	'Nuccio's Carousel'	Dale & Mary Key Mittag
Runner-up Single	'Silver Chalice'	Eugene Snooks

Court of Honor Single	'Firedance Var.'	Tom & Dody Gilfof
Best Tray of 3	'Firedance Var.'	Dale & Mary Kay Mittag
Runner-up Tray of 3	'Nuccio's Carousel'	Brad & Lynn King
Court of Honor Tray of 3	'Betty Foy Sanders'	Brad & Lynn King
Best Tray of 5	'Firedance Var.'	Dale & Mary Kay Mittag
Runner-up Tray of 5	'Nuccio's Carousel'	Brad & Lynn King
Court of Honor Tray of 5	'Wildfire'	Brad & Lynn King
Japonica—Small		
Best Single	'Red Hots'	Mel & Bobbie Belcher
Runner-up Single	'Demi-Tasse'	Mel & Bobbie Belcher
Court of Honor Single	'Red Devil'	George & Karen Harrison
Japonica—Miniature		
Best Single	'Lemon Drop'	Doris Dermody
Runner-up Single	'Little Michael'	Don & Marilee Gray
Court of Honor Single	'Little Slam Var.'	Jackie Randall
Japonica—Small or Miniature		
Best Tray of 3	'Hishi-Karaito'	Les & JoAnn Brewer
Runner-up Tray of 3	'Red Hots'	Don & Marilee Gray
Court of Honor Tray of 3	'Lemon Drop'	Doris Dermody
Best Tray of 5	'Red Hots'	Tom & Dody Gilfof
Runner-up Tray of 5	'Hishi-Karaito'	Don & Marilee Gray
Court of Honor Tray of 5	'Tama Peacock'	George & Karen Harrison
Japonica—Special Culture		
Best	'Elegans Splendor'	Don & Marilee Gray
Runner-up	'Royal Velvet'	Don & Marilee Gray
Court of Honor	'Miss Charleston Var.'	Don & Marilee Gray
Reticulata or Reticulata Hybrid		
Best Single	'Frank Houser Var.'	Jac Fagundo
Runner-up Single	'Frank Houser'	Jac Fagundo
Court of Honor	'Miss Tulare'	Les & JoAnn Brewer
Best Tray of 3	'Frank Houser'	Les & JoAnn Brewer
Runner-up Tray of 3	'Frank Houser Var.'	Mel & Bobbie Belcher
Court of Honor Tray of 3	'Fiesta Grande'	Rudy Blanco
Best Tray of 5	'Frank Houser'	Les & JoAnn Brewer
Runner-up Tray of 5	'Emma Gaeta Var.'	Rudy Blanco
Court of Honor Tray of 5	'Valley Knudsen'	Joe & Linda Tunner
Special Culture		
Best	'Frank Houser'	Don & Marilee Gray
Runner-up	'Frank Houser Var.'	Mel & Bobbie Belcher
Court of Honor	'Ruta Hagmann'	Mel & Bobbie Belcher
Non-Reticulata Hybrid		
Best Single	'Spring Daze'	Brad & Lynn King
Runner-up Single	'Super Star'	Tom & Dody Gilfof
Court of Honor	'Coral Delight Var.'	Brad & Lynn King
Best Tray of 3	'South Seas'	Les & JoAnn Brewer
Runner-up Tray of 3	'Buttons 'n Bows'	Bob & Mary Sheriff
Court of Honor	'Nicky Crisp'	Steve & Nancy Mefford
Best Tray of 5	'Super Star'	Tom & Dody Gilfof
Runner-up Tray of 5	'Lucky Star'	Bob & Mary Sheriff
Court of Honor Tray of 5	'Jury's Yellow'	Joe & Linda Tunner
Special Culture		
Best	'Nicky Crisp'	Don & Marilee Gray
Runner-up	'Pink Dahlia'	Don & Marilee Gray
Court of Honor	'Island Sunset'	Brad & Lynn King

Old Timers Bloom

Best	'Drama Girl'	Tom & Dody Gilfoy
Runner-up	'Joshua Youtz'	Beth Stone
Court of Honor	'Magnoliaeflora'	Brad & Lynn King

Species

Best	'Egao'	Les & JoAnn Brewer
Runner-up	'Shibori Egao'	Gene & Elynor Baughman
Court of Honor	'Yuletide'	Gene Snooks

Collector's Tray of 3 Mixed Varieties

Best	'Henry E. Huntington', 'Magnoliaeflora', 'Sunny Side'	Don & Marilee Gray
Runner-up	'Ruta Hagmann', 'Nuccio's Jewel', 'Spring Daze'	Brad & Lynn King
Court of Honor	'Fashionata', 'Jenny Mills', 'Hishi-Karaito'	Les & JoAnn Brewer Rudy Blanco

Best Seedling**Novice—Large/Very Large**

Best	'Twilight'	Faith Crane
Runner-up	'Egao Corkscrew'	Mary Minando

Novice—Medium, Small, Miniature

Best		Rose Marie Markus
Runner-up		Rose Marie Markus

Intermediate—Large/Very Large

Best	'Glen 40'	Bill Lynn
Runner-up	'C. M. Wilson'	Bill Lynn

Intermediate—Medium, Small, Miniature

Best	'Magnoliaeflora'	Bill Lynn
Runner-up	'Coral Delight'	Donald & Martha Beckman

POMONA VALLEY CAMELLIA SOCIETY
60th Annual Camellia Show
February 17 and 18, 2007

Japonica—Large/Very Large

Best Single	'Royal Velvet'	Lindsey Brewer
Runner-up Single	'Snowman'	Mel & Bobbie Belcher
Court of Honor Single	'Junior Prom'	Don & Marilee Gray
Best Tray of 3	'Royal Velvet'	Lindsey Brewer
Runner-up Tray of 3	'Snow Chan'	Tom & Dody Gilfoy
Court of Honor Tray of 3	'Kramer's Sup.'	Victor & Linda Rodriguez
Best Tray of 5	'Royal Velvet'	Lindsey Brewer
Runner-up Tray of 5	'Lady Laura'	Brad & Lynn King
Court of Honor Tray of 3	'Showtime'	James Fitzpatrick

Japonica—Medium

Best Single	'Grand Marshal'	Victor & Linda Rodriguez
Runner-up Single	'Eleanor Martin Sup.'	Tom & Dody Gilfoy
Court of Honor Single	'Nuccio's Carousel'	Les & JoAnn Brewer
Best Tray of 3	'Pearl Maxwell'	George & Karen Harrison
Runner-up Tray of 3	'Wildfire'	Tom & Dody Gilfoy
Court of Honor Tray of 3	'Firedance'	Tom & Dody Gilfoy
Best Tray of 5	'Grand Marshal'	James Fitzpatrick

Runner-up Tray of 5	'Margaret Davis'	James Fitzpatrick
Court of Honor Tray of 5	'Midnight Var.'	Nancy Kress
Japonica—Small		
Best Single	'Red Hots'	Marvin & Virginia Belcher
Runner-up Single	'Irene'	Les & JoAnn Brewer
Court of Honor Single	'Maroon and Gold'	Brad & Lynn King
Best Tray of 3	'Maroon and Gold'	Tom & Dody Gilfoy
Runner-up Tray of 3	'Tama Peacock'	George & Karen Harrison
Court of Honor Tray of 3	'Pink Perfection'	Jac Fagundo
Best Tray of 5	'Red Hots'	Marvin & Virginia Belcher
Runner-up Tray of 5	'Hishi-Karaito'	Don & Marilee Gray
Court of Honor Tray of 5	'Maroon and Gold'	Les & JoAnn Brewer
Japonica—Miniature		
Best Single	'Grace Albritton'	Les & JoAnn Brewer
Runner-up Single	'Little Red Riding Hood'	Tom & Dody Gilfoy
Court of Honor Single	'Little Michael'	Mel & Bobbie Belcher
Best Tray of 3	'Little Michael'	Mel & Bobbie Belcher
Runner-up Tray of 3	'Man Size'	Les & JoAnn Brewer
Court of Honor Tray of 3	'Shikibu'	Joe & Linda Tunner
Best Tray of 5	'Little Red Riding Hood'	Tom & Dody Gilfoy
Runner-up Tray of 5	'Hishi-Karaito'	Don & Marilee Gray
Court of Honor Tray of 5	'Grace Albritton'	Julius & Dorothy Christinson
Japonica—Special Culture		
Best	'Miss Charleston Var.'	Don & Marilee Gray
Runner-up	'Cherries Jubilee'	Don & Marilee Gray
Court of Honor	'Royal Velvet'	Don & Marilee Gray
Reticulata or Reticulata Hybrid		
Best Single	'Frank Houser'	Jac Fagundo
Runner-up Single	'Dr. Clifford Parks'	Nancy Kress
Court of Honor Single	'Frank Houser Var.'	Jac Fagundo
Best Tray of 3	'Frank Houser'	Tom & Dody Gilfoy
Runner-up Tray of 3	'W. P. Gilley'	Tom & Dody Gilfoy
Court of Honor Tray of 3	'Dr. Clifford Parks'	Nancy Kress
Best Tray of 5	'Frank Houser Var.'	Victor & Linda Rodriguez
Runner-up Tray of 5	'Frank Houser'	Tom & Dody Gilfoy
Court of Honor Tray of 5	'Dr. Clifford Parks'	Les & JoAnn Brewer
Special Culture		
Best	'Frank Houser'	Don & Marilee Gray
Runner-up	'Queen Bea'	Don & Marilee Gray
Court of Honor	'Emma Gaeta Var.'	Don & Marilee Gray
Non-Reticulata Hybrid—Large/Very Large/Medium		
Best Single	'Hot Stuff'	Steve & Nancy Mefford
Runner-up Single	'Island Sunset'	George & Karen Harrison
Court of Honor Single	'Lucky Star'	Joe & Linda Tunner
Best Tray of 3	'Orchid Princess'	Tom & Dody Gilfoy
Runner-up Tray of 3	'Coral Bouquet'	George & Karen Harrison
Court of Honor Tray of 3	'Nicky Crisp'	Steve & Nancy Mefford
Best Tray of 5	'Jury's Yellow'	Joe & Linda Tunner
Runner-up Tray of 5	'Island Sunset'	Brad & Lynn King
Court of Honor Tray of 5	'High Fragrance'	Don & Marilee Gray
Non-Reticulata Hybrid—Small or Miniature		
Best Single	'Buttons 'n Bows'	Steve & Nancy Mefford
Runner-up Single	'Coral Delight Var.'	Jac Fagundo
Court of Honor Single	'Minimint'	Tom & Dody Gilfoy

Best Tray of 3	'Freedom Bell'	Brad & Lynn King
Runner-up Tray of 3	'Spring Daze'	Dale & Mary Kay Mittag
Court of Honor Tray of 3	'Buttons 'n Bows'	Don & Marilee Gray
Best Tray of 5	'Spring Daze'	Tom & Dody Gilfoy
Runner-up Tray of 5	'Buttons 'n Bows'	Don & Marilee Gray
Court of Honor Tray of 5	'Jackpot'	Brad & Lynn King
Non-Reticulata—Special Culture		
Best	'E. G. Waterhouse'	Don & Marilee Gray
Runner-up	'High Fragrance'	Don & Marilee Gray
Court of Honor	'Golden Glow'	Don & Marilee Gray
Species		
Best Single	'Yuletide'	Dale & Mary Kay Mittag
Runner-up Single	'Botan-Yuki'	Jac Fagundo
Court of Honor Single	'Star Above Star'	Brad & Lynn King
Collector's Tray of 3 Mixed Varieties		
Best Tray	'Royal Velvet Var.', 'Candy Apple', 'Maroon and Gold'	Jac Fagundo
Runner-up Tray	'Tata', 'Mary Alice Gay', 'Man Size'	Les & JoAnn Brewer
Court of Honor Tray	'Miss Charleston Var.', 'Eleanor Martin Sup.', 'Little Slam Var.'	Mel & Bobbie Belcher
Best Yellow Bloom	'Chrysantha'	Rudy Blanco
Best Fragrant Bloom	'Kato-No-Kaori'	Kristina Hooper
Best Seedling		Rudy Blanco
Old Timers Bloom		
Best	'Herme'	Jim & Armida Wilkin
Runner-up	'Magnoliaeflora'	Doris Dermody
Court of Honor	'Elegans Chandler'	Joe & Linda Tunner
Novice		
Best Single	'Kramer's Supreme'	Roberta Fisher
Runner-up Single	'Hot Stuff'	Emma Fagundo
Court of Honor Single	'Debutante'	Douglas Purther
Intermediate		
Best	'Kramer's Supreme'	Roberta Fisher

THE FRONTIERS OF CAMELLIA HYBRIDIZING—PART I

Bradford King
Arcadia, California

Successful businesses and health and educational institutions spend time and effort developing a strategic plan. A camellia hybridizing program also needs a strategic plan and a key initial step is to articulate a vision.

VISION

In 1978 Julius Nuccio of Nuccio's Nursery in Altadena, California shared his vision for hybridizing. "It is every camellia grower's dream to develop a camellia with the foliage of *C.*

japonica, the vigor and exposure range of *C. sasanqua*, the fragrance of *C. lutchuensis*, the flower style of a large *C. reticulata*, the mass bloom of *C. saluenensis* and, of course, yellow." His vision statement holds true today.

PROGRAMS

Most of the hybridizing in the past focused on developing better landscape plants or beautiful new show flowers. These programs have been very successful in developing blooms of many sizes, forms and

colors and the results of these efforts can be seen in the camellia shows throughout the world. According to Jude Nuccio, Nuccio's Nursery plants 25,000 seedlings a year in the hopes of marketing two or three new varieties during the next seven to ten years. This high volume of chance seedlings has helped Nuccio's offer over 200 wonderful new camellias over the past 70 years. We expect hybridizers to continue to be interested in developing new show and landscape camellias.

OBJECTIVES

A hybridizing program begins with a specific objective. For example, three years ago when I began my adventure into hybridizing, my objective was to develop a large dark red camellia with white borders. I chose 'Tama-No-Ura' as the seed parent because it sets seeds readily and blooms profusely. The white border of this small single red flower has shown to be transmitted genetically to some of its seedlings. In order to have some chance of getting a large dark red flower, I knew the pollen parent should have these qualities. I did controlled crosses with pollen from large red blooms of 'San Dimas', 'Grand Prix', 'Grand Slam', 'Glen 40', 'Royal Velvet' and 'Bob Hope'. Of course I am still waiting for the 100 plus seedlings I propagated to bloom in order to evaluate their progress toward my objective.

FRONTIERS

The most important frontier for camellia hybridizing is for blooms that are either yellow, fragrant, clustered or that flower all year long. The development of cold hardy camellias is also a significant hybridizing frontier. As a Southern California resident it is not a program that interests me. However, as a camellia enthusiast, I respect and value this objective and applaud the pioneer work of Dr. Clifford Parks and Dr. William Ackerman in the development of cold hardy camellias.

Dr. Parks concentrated on intraspecific crosses with *C. japonica* and developed cold tolerant cultivars such as 'April Blush', 'April Dawn', 'April Remembered', 'April Rose', 'April Snow' and 'April Tryst'. Dr. Ackerman focused his program on crosses of *C. oleifera* with fall and spring flowering cultivars and developed fall bloomers such as 'Snow Flurry', 'Polar Ice', 'Winter Beauty', 'Winter Hope', 'Winter Interlude' and 'Winter Rose'. Dr. Ackerman's spring flowering variants include 'Fire 'n Ice', 'Ice Follies', and 'Spring Frill'. In the 2005 *American Camellia Yearbook*, Dr. Ackerman reported he had a total of 51 named cold hardy hybrids as a result of his 45 years of research.

YELLOW CAMELLIAS

When *C. nitidissima* (formerly *C. chrysantha*) was discovered in China in the early 1980's it created much excitement and promise for camellia breeders in their quest to develop large yellow blooms. Unfortunately, the next 30 years did not bring the hoped for success. According to Dr. Ackerman, the yellow genes are recessive to all other color genes, even white. In addition, he reports that the interspecific crosses are very difficult with F1 hybrids. Gao, Parks and Du (2005, p.112) state, "It (*C. nitidissima*) has been widely used in breeding programs, but it is nearly incompatible with other camellia species."

While my experience is limited to using pollen from *C. nitidissima* and *C. microcarpa* crosses to good seed parents such as 'Betty Sheffield Coral', I had no "takes" at all. This increased my respect for the few hybridizers who have been successful in their attempts.

Mr. Tadao Yamaguchi of Ishikawa, Japan is a pioneer in developing yellow camellias. He has developed 'Shoko', 'Kicko', 'Kiho' and 'Ki-No-Gozan'. Two of the *C. japonica* seed parents are unlisted in the Southern California 2006 *Camellia Nomenclature*. The other two are

listed in the 1996 *Camellia Supplement*. They are both white flower producing plants. 'Hatsu-Arashi' or 'First Storm' is a 1935 small single from Japan and was the seed parent of 'Kicho'. 'Hakuko', a medium peony form plant, served as the pollen parent with *C. nitidissima* as the seed parent for 'Kiho'.

I have another of Yamaguchi's crosses with *C. nitidissima* 'Hi-No-Joman', a lovely small salmon pink single flower. It blooms profusely on a bushy, vigorous upright plant. I used it as a pollen parent this year. One of my ten attempts took with *C. japonica* seed parents but all six tries failed to cross with *C. reticulata*. Currently, I have one seedpod growing from these crosses on 'Tama-No-Ura'. This exceptionally low take supports the difficulty with *C. nitidissima* crosses even when there is *C. japonica* in their genetic history.

Mr. Kazuo Yoshikawa of Osaka, Japan has pursued many avenues in his goal to produce yellow camellias and has used *C. saluenensis* hybrids, *C. reticulata* hybrids, *C. japonica* and *C. sasanqua*. Nuccio's Nursery has four of his crosses: 'Ki-No-Moto #92', 'Ki-No-Moto #95', 'Kogane Nishiki', and 'Kogane-Yuri'. He has also introduced 'Kagirohi' one of the deepest crosses to date. It is a formal double produced by crossing 'Silver Chalice' with *C. nitidissima*.

The frontier in developing a yellow camellia is to use one of the 38 yellow flowered camellias besides *C. nitidissima*. My investigation into these yellow camellia species leads me to recommend two potential candidates. My top pick is *C. flava*. According to Gao, Parks and Du, it hybridizes readily with *C. japonica* and develops into a small shapely tree with small leaves. The yellow flower is small (1" to 2") with a large number of petals. My second choice is *C. euphlebica*. Gao, Parks and Du (2005, p.95) state, "This species is fast-growing, tolerant of a wide range of growing conditions,

and resistant to disease. It is an excellent garden and landscape plant for mild areas and may be useful in breeding programs."

Most hybridizing programs seeking to produce fragrant camellias have used *C. lutchuensis*, *C. fraternata* and *C. tsaii*.

The last forty years has brought some success, but further work is needed. Nuccio's 2005-2006 catalog lists only 10 fragrant camellias. Nuccio's best fragrant introduction is 'Scented Gem', a miniature fuchsia-pink anemone form with white petaloids.

One avenue hybridizers followed was to use cultivars with a slight scent such as 'Kramer's Supreme' paired with *C. lutchuenensis* hybrids. The best example is 'Ach-Scent' a shell-pink full peony medium with a deep spicy fragrance introduced by Dr. Ackerman in 1978. Japanese growers concentrated their efforts using scented Higo japonica camellias. A notable fragrant parent is 'Nioi Fubuki' or 'Scented Storm'. This white flower with carmine-colored stripes is a typical Higo form with 150 pale yellow stamens.

Jim Finaly of Whangarei, New Zealand may have had the most successful fragrant camellia program thus far. Three of his best are 'Superscent', 'Scentuous' and 'High Fragrance'. 'High Fragrance' is, in my opinion, the best fragrant show flower developed to date. This peony form pale-pink bloom shades to deeper pink at the edge and has a lovely scent. It is a seedling cross between hybrid 'Salab' with 'Scentuous' as the pollen parent. The seed parent was *C. japonica* 'Mrs. Bertha A. Hams', an ivory-white large semi-double with wavy, crepe petals with a pink tone. The frontier in developing additional fragrant camellias is to broaden the horizon and use a wider range of fragrant camellia species, i.e. *C. Forrestii*, *C. fraternal*, *C. kissi*, *C. meygaii*, *C. synoptica*, *C. tsaii*, and *C. yunnanensis*. My top recom-

mentation is *C. yuhsienensis* because it is fragrant and flowers in clusters—two potentialities in one! The very small white flower blooms profusely in midseason on an upright plant. It is the pollen parent of ‘Yume’. The seed parent used by Dr. Kaoru Hageya was ‘Shishi Gashira’. ‘Yume’ is a small single pink flower with genetic white blotches. Its abundant blooms make a showy display mid-to-late season

My second pick is *C. grijsii*, a very fragrant small white flower with potential to produce clusters. Hybridizing potential is excellent if the parental chromosome numbers

can be identified. Researchers report that *C. grijsii* is a diploid with sub varieties having different numbers of chromosomes, such as 30, 45, 75 and 90. Hybridizing results would be best if both parents have the same number of chromosomes. For example, *C. japonica*, a diploid with 30 chromosomes, should be hybridized with *C. grijsii* with 30 chromosomes. Conversely, less success would be anticipated if the sub variety carries 45, 75 or 90 chromosomes.

(Editor's note: Look for Part II in the next issue of *The Camellia Review*.)

GROWING CAMELLIAS ON CALIFORNIA'S NORTH COAST

Dan Charvet, Heartwood Nursery
Ft. Bragg, CA 95437(707) 964-7990

WIn 1979 our new family moved to the Mendocino Coast. Before our move my wife Patti and I worked for Robert Boddy of Descanso Nurseries and had both become certified by the California Association of Nurserymen. While working for Berkeley Horticultural Nursery we gained valuable retail experience and soon opened our own general retail outlet in Ft. Bragg as Heartwood Nursery.

After becoming acquainted with local gardeners it became apparent, much to my dismay, that in their experiences camellias just didn't do well in the North Coast area. However, there seemed to be some evidence to the contrary. “Old timers” Dr. Paul Bowman, Gene German and John Druecker had clearly demonstrated that there were some spectacular exceptions. What is sad but true is that *C. japonica* varieties usually don't succeed in this coastal area.

Something you might not know about the Mendocino Coast is that the average winter daytime temperature is a tolerable 55°F and the average summer temperature is a blistering 65°F. This cool summer temperature results in a severe heat shortage for those plants that need more heat. This

includes most varieties of everyone's favorite *C. japonica*. For most japonicas, if planted as under-story plants or in northern or eastern exposures as is customary in warmer climates, there will be few if any flowers. Unbelievably, some varieties for lack of sufficient heat actually succumb. In contrast, on a recent one-hour trip to Ukiah, I chanced upon a *C. japonica* variety sited in an alcove on the north side of a tall public building. If that plant had been given similar placement in Ft. Bragg, it might not have survived. However, the plant in Ukiah had, by all appearances, flourished even though it had been mangled, maimed and otherwise violated by those looking for the perfect bloom to present to a beloved—or possibly just to keep for one's own pleasure.

Heat deficiency in Ft. Bragg also applies to *C. japonica* as seed parents. Believe it or not, ‘Tinsie’ and ‘Berenice Boddy’, both well-known seed parents, will not set seed in this area even when hand-pollinated. Most camellias planted on the North Coast during the last 80 years were *C. japonica* varieties and had been planted in strong sun locations. This

resulted in golden-leaved shrubs which appeared to have nutritional deficiencies and the flowers turned brown prematurely. I called this effect of sun on overexposed foliage "bleaching." I can't begin to guess how many homeowners have been told by their knowledgeable neighbors to purchase iron from us for their camellias which probably had not received any balanced fertilizers in years. I usually persuaded them to buy the correct fertilizer but that can't change the outcome for good plants in bad locations. Something else to be considered is the fact there can often be viral infections visible in the foliage which can confuse the issue even further.

Sun-bleaching in camellias is very interesting because of the way their leaves react to the daytime fog of the coastal zones. Most *C. japonica* varieties are very intolerant of the frequent changes from fog to sun. In the more inland areas, it has been my experience that the leaves of the japonicas become a darker green until you reach a point that the possibility of true sunburn takes over. At this point, some protection is needed and you are probably in a location where the typical *C. japonica* performs at its best.

There are several other broadleaf evergreen plants that suffer the same fate in fog-influenced areas—boxwood, privet and star jasmine to name a few. Most rhododendrons will flourish and do particularly well when grown in full sun. In the case of rhododendrons and camellias it is often the flower color and/or the effect of direct exposure to UV light to that particular color that might determine the siting for that variety. Often varieties that have coral and orange tones are less able to cope with direct exposure to UV sunlight. This does not mean, however, that they need protection from the sun in the growing season when the benefits are greatest but only during the

blooming period.

C. sasanqua is often sold as being sun-tolerant, but it also has an extremely high heat requirement for flower bud development. However, the leaves do not bleach and many flowers are often produced when planted in full sun.

C. x Williamsii and *C. x Petardi*, as would be expected due to the success demonstrated in England, have very low heat requirements and bloom in light shade. Sun tolerance is varied. Where 'E. G. Waterhouse', 'Tulip Time' and 'Nicky Crisp' have leaves that need some protection, they will nonetheless bloom spectacularly. In contrast, 'El Dorado', 'Donation' and 'Freedom Bell' are truly exceptional when grown in full sun. Of course, the local growers know not to plant camellias that have direct line of sight to the ocean. The cold winds coming from the northwest in spring and the salt-laden blasts from the South in the winter will trigger a slow-death experience. This actually applies to almost all living things over six inches tall.

There are mixed results in the "tea group." *C. sinensis* and all the yellow species of which I am familiar detest any direct sunlight on their foliage and generally fail to bloom under any conditions. By contrast *C. irrawadiensis* and *C. taliensis* can become large, rich green and bursting with flowers when located anywhere from full sun to moderate shade. Hard frosts (freeze) can cause severe damage but, if it's that cold, there will be many more serious concerns.

Alas, it appears that *C. lutchuenises* has a rather high heat requirement. Couple this with the average *C. japonica* need for heat, it takes little to guess the outcome of attempts at growing these hybrids in cool summer areas. Some of these plants have inherited the *C. lutchuenises* tolerance of sun which has resulted in some success especially when varieties with simple flowers are attempted.

As might be expected, *C. lutchuensis* when crossed with *C. saluenensis* to produce the low heat, free-flowering *C. Williamsii* types, flowers freely in either full sun or part shade. For the most part, so do the rest of the closely related small-flowered species such as *C. transnokoensis*, *C. cuspidate*, *C. fraternal* and *C. forrestii*.

So what then of the Queen of all camellia species—*C. reticulata* and its hybrids. Any sensible person might reasonably conclude that those huge flower buds and resulting flowers might need longer warmer summers than those of the more commonly grown *C. japonica* and its varieties. Well, the “Old Timers” mentioned above have shown, much to my delight, that *C. reticulata*, and perhaps even more importantly its hybrids, have very little problem finding adequate heat for proper bud formation. Furthermore, the foliage of most varieties, although sometimes lighter in color, show little tendency to bleach and plants sited in full sun can become magnificent specimens. The only limitations appear to be found in varieties whose flowers have some degree of coral or other sun-hating color. These blooms seem

subject to fading but sitting where the flowers are protected from direct sun is the simplest remedy.

Camellia petal blight is seldom a problem on the North Coast. I may be cynical and suggest that it's because the typical *C. japonica* variety flower fades/burns/rots before blight becomes an issue. But, in truth, it's because petal blight's apparent needs for both high heat and high humidity are seldom seen here before late March and early April by which time even the most ardent camellia fan, including the writer, might find their seasonal enthusiasm waning.

I think it has been demonstrated that *C. japonica* varieties struggle in the cool temperate settings of Mendocino and Humboldt County zones whereas both *C. x. Williamsii* and *C. x reticulata* often perform spectacularly. Developments following these latter lines, coupled with the low heat demands of many smaller flowered species might provide the varieties that will expand the use of camellias into cool summer areas where the performance of many *C. japonica* varieties has shown to be less than desirable.

2007 NORTHERN CALIFORNIA JUDGES' SYMPOSIUM

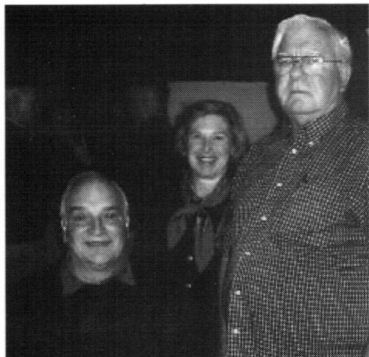
Don Lesmeister,
Carmichael, California

The Northern California Camellia Council sponsored the 2007 Judges' Symposium held at the Club Pheasant in West Sacramento California on January 20. There were 41 accredited and novice judges for the symposium and the luncheon that followed.

ACS Rules and Regulations Governing Procedures and Judging of American Camellia Society Cooperative Shows were presented by Professor Don Bergamini and Don Lesmeister, “The Dons”

The Revised March 5, 1992 “Rules” and the November 10, 2006 Revised “Rules” were reviewed and explained to those attending. Because of some extreme cold weather there was a lack of camellia blooms available for identification. Professor Don Bergamini presented a slide show of blooms for identification.

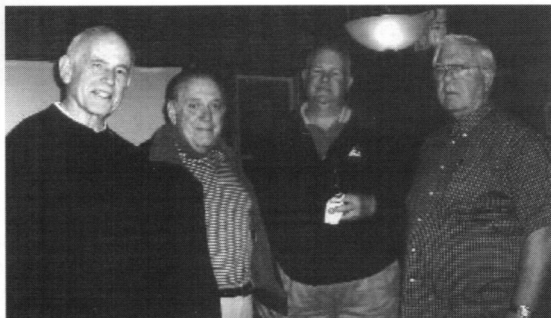
Upon completion of the class, Professor Bergamini announced that all attendees had completed the class with flying colors.



**Lunch and Fellowship
after the
Symposium**

(l - r)
Don Bergamini, Barbara Tuffli
and Don Lesmeister

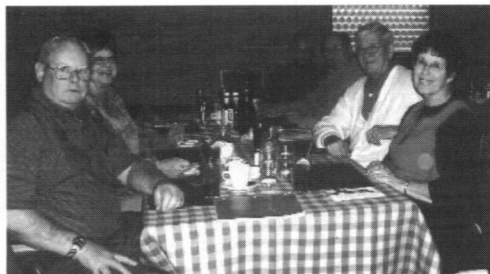
(l - r)
Bill Allman
Ron Hardman
Gary Schanz
Don Lesmeister



(l - r)
Virginia Rankin
Jean Toland
Jim Toland
Bev Allman



(l - r)
Ron Morrison
Arlene Morrison
Natalie Miranda
Tony Miranda
Helmuth Wildemann
Leone Wildemann



NOTES AND NOTABLES



At the April 2006 Home Remodeling and Decorating Show in Pasadena, Jeanne Trefzger of Aradia won first prize in the Flower and Rose Competition sponsored by radio personality and garden expert Nick Federoff.

Jeanne's prize was a cruise to Mexico.

You will remember reading **Eli-Margrete Stolvik's** article "The Camellia Moves North" in the last issue of The Review. On December 17 Eli wrote "The society has had 4 meetings this fall and we are now 28 members.

This June we started the very first public Camellia Garden by planting 7 plants in the Stavanger Botanic Garden. Per date we can see that three of them have buds. The first one to bloom for us is 'Winter's Beauty' that opened the first of its 16 buds the 15. December. It was a great pleasure to see the small pink flower on the very small plant, just 20 cm above the ground. The two other plants that have buds are 'Freedom Bell'. I think they will bloom in the Spring but we never know in this part of the world. "

In March 2007 Eli wrote "For now it looks (and feels) like the coldest weather is over in my part of Norway. The small camellia plants in the botanic garden did survive the frost this year even the ones that had been damaged by some deer earlier this

autumn. I have been travelling to different places in the southern part of Norway this last two weeks for giving camellia presentations. Nice to share my hobby and joy!"

Greg Davis, ICS president, wrote that Hyman Norsworthy had died at 87. "Hyman was the most dedicated, hard working, biggest prize winning Camellia grower in the Texas-Louisiana area. All area camellia shows greatly appreciated his 60 to 100 prized winning blooms which he religiously entered for many years. The Camellia World will have much difficulty in replacing Hyman's prize winning camellia blooms." (*Editor's note: What a legacy!*)

And **Leosia Wentink** wrote in January that her garden was "ablaze with camellias!" (*Editor's note: What a picture!*)

Did you know that
a garden is a friend you can
visit anytime!

WATERING CAMELLIAS

J. Carroll Reiners
Sacramento, California

HOW OFTEN? and WHEN? are common questions relative to watering. The answer for the frequency of watering is before the soil surface gets dry, and when convenient, be it be morning, noon, or night. There are traps, which I explain at length. For instance, some soil surfaces are bone dry, in hardpan soils, and 18 inches down they are water-logged. Camellias growing where fertilizer salts have accumulated to a toxic degree would die if not sufficiently wet to keep the salts diluted to plant tolerance. During certain seasons of the year, know when watering should be done relative to the time of day.

Water camellias before the plant gets into stress so serious it cannot keep its tissues with water to prevent the growing tips, leaves, and/or flowers from wilting. This condition should never be allowed to occur. Water loss depends on the moisture-holding capacity of the soil, air temperature, humidity, wind velocity, sun exposure, reflected heat, mulching media, and competition of other roots. In container plants we have the relationship of the size of the container to the root system and area of leaf surface. Root-bound container plants dry out quickly. The grower will have to adapt his watering; it is necessary to take corrective measures to relieve an irrigation problem.

Sandy soils can be improved to better hold water by adding organic material, including compost, lawn clippings, peat, ground bark, sawdust, leaf mold, etc. These materials loosen up heavy soil and better drainage follows. Air temperatures are controlled by supplying shade. Lath is the poorest shade material because it provides intermittent hot sun and shade; camellia leaves burn under this condition. Low lath is a poor choice, high lath better. Saran is the

finest of shade materials. High tree shade is excellent.

Humidity is controlled by spray irrigation and moisture released from other vegetation adjacent to camellias. Wind, sun, and reflected heat must be controlled if severe. Mulching, either living or dead organic, is desirable to regulate the soil temperature and moisture conditions.

Camellias in well-drained soil are easiest to manage effectively. Fertilizer burn is minimized because the salts are easily flushed from the soil without concentration in the top root areas, as happens in tight, poorly drained soils, but over-leaching from too lengthy watering is a danger in very porous soils. Nitrogen leaches very readily, potash leaches only moderately fast; phosphate usually fixes to the soil just where it is placed. Recently, tests on lawns showed that all of the phosphorus in an application remained in the top one inch of lawn soil. The other common nutrients leached to various deeper levels.

The water-holding capacity of heavy soil is much higher than in silt or sand, so it doesn't need irrigation often. Over-fertilization is a danger in this condition, and also buildup of materials from "hard water." A grower residing on heavy soil will profit by using an auger to test the soil moisture. Test to depths of 12, 18, and 24 inches below the surface. Watering can be regulated by these tests which will save defoliation, dieback, and eventual death of the camellias. In severely heavy soil conditions, plant your camellias on top of the ground in raised beds.

Roots from nearby trees can "sap" the earth of water. The ground may be wet on top, but below greedy tree roots will leave the camellias bone-dry. Water thoroughly and deeply. Irrigation may be continued

for several hours at a time. In extreme problems, bore an irrigation well several feet deep and fill with gravel so that water goes deeply into the tree-root zone. This will reduce the tree root competition in the camellia's root zone, making all plants happy. Camellias are very tolerant of root competition, but they need their share of moisture, particularly when temperatures are high and humidity low.

Plants in containers eventually become root-bound. Repotting to a larger container with fresh soil restores the capacity for water storage. When the grower has repotted his plants into a maximum size container, the situation is saved by removing cores of earth and root; an electric drill with a very long shank bit does the job rather quickly. You fill the holes with peat or other media which have good water holding capacity. In six months the cores will be filled with fresh, white, vigorous camellia roots. One can remove up to six cores from a two-gallon container without wilting the plant. If necessary, you may core the container two times a year, picking new spots each time. The bit for coring should be at least one inch in diameter and the drill sharp enough to cut cleanly.

A trouble caused by snails, pill bugs, etc., creates irrigation problems by "excavating" large cavities in the containers at the drainage holes. Cavities cause rapid drying. Put gravel and clay pot fragments around the drain holes to cure.

There is no specific amount of water, in inches, to apply. Conditions vary, but we can make a quasi-comparison with lawn seed using the following application in inches per week: Pacific coastal areas, one inch; inland areas, 1½ inches; Sacramento and San Joaquin Valleys, 2 inches; and desert areas, 2½ inches. It will take about 15 minutes to apply 2 inches of water over a 100 square foot area from a hose running a full

stream. If you use a sprinkler system, ask the dealer for the rate for your sprinkler.

The above figures are given for the peak demand months of the year. Camellias would need less water than lawns because the exposure to sun usually is quite different.

Time of day for watering is important. At blooming time, minimize blossom rot by never wetting the flowers on the plants; water in early morning, so by evening the ground will have had a chance to dry to lower the humidity and discourage blossom rot.

During the vegetative growth periods, use overhead irrigation. Clean camellias are apt to be the most healthy. Adverse pests on plants are reduced by regular foliage washing. Camellias suffer when the weather is windy, hot and dry, so then foliage and soil should be watered. Leaf burn and leaf wilt occur when the plant's root system cannot supply moisture to replace the loss from leaf transpiration; the plant needs water to maintain cell turgidity.

Leaves won't burn if water is applied in mid-day sun. This often-seen statement is just as persistent as an old wives' tale. Water and humidity on the leaf will prevent burn. Plants in stress can absorb water through the leaf area faster than from the root zone to the leaf. These are proven facts.

Everyone has different watering problems. Many difficulties are solved by analysis and reference to some of our solutions. Deep-water once or twice a week to keep the root zone properly moist. During hot weather, water frequently at very short intervals. Raise garden humidity, since camellias are forest plants and they like a lush, humid atmosphere as well as a moist root zone; the closer you approach this condition, the better your results.

The Camellia Bulletin, August
1963

DIRECTORY OF CALIFORNIA CAMELLIA SOCIETIES

ATWATER GARDEN CLUB & CAMELLIA SOCIETY; President—Sherry Miller; Secretary—Pam Jambor, PO Box 918, Atwater, CA 95301, Meetings 3rd Tuesday, September-June, 6:30 p.m. St. Nicholas Episcopal Church, 1635 Shaffer Road, Atwater.

KERN COUNTY, CAMELLIA SOCIETY OF: President—Helen Maas; Secretary—Robin Cole, 829 Oleander Ave., Bakersfield, CA 93304. For meeting dates and times, call Helen Maas (661)872-2188.

MODESTO, CAMELLIA SOCIETY OF: President—Don Kendall; Secretary—Sue Kendall, 1505 Gary Lane. Modesto, 95355. Meetings: 1st Sunday, October-April, 1:00 p.m., 220-A Standiford Avenue, Modesto.

NAPA VALLEY CAMELLIA SOCIETY: President—Jack Tognetti; Secretary—Nancy McGowan-Russell (msrussell@comcast.net). Meetings: 1st Monday, September-May. Napa Senior Center, 1500 Jefferson Street, Napa.

NORTHERN CALIFORNIA CAMELLIA SOCIETY: President—Mary Bergamini; Secretary—Don Bergamini. Meetings: 1st Monday, November-April, 7:30 p.m., Oak Grove School, 2050 Minert Road, Concord. Final meeting in May is a dinner meeting.

ORANGE COUNTY CAMELLIA SOCIETY: President—Steve Mefford; Secretary—Bob Sheriff, 27333 Paseo Laguna, San Juan Capistrano 92675. Meetings: 1st Monday, October-April, 7:00 p.m. Tustin Senior Center, 200 S. "C" Street, Tustin.

PACIFIC CAMELLIA SOCIETY: President—George Harrison. Secretary—Dorothy McQuiston, 6212 Los Angeles 90028. Meetings: 1st Thursday, November-April, 7:00 p.m., Descanso Gardens, 1418 Descanso Drive, La Canada.

POMONA VALLEY CAMELLIA SOCIETY: President—David Trujillo; Secretary—Dorothy Christinson, 3751 Hoover St., Riverside 95204. Meetings: 2nd Thursday, November-April, 7:00 p.m., La Verne Community Center, "D" Street, La Verne.

SACRAMENTO, CAMELLIA SOCIETY OF: President—Jackie Randall; Secretary—Gary Schanz, 1177 Cavanaugh Way, Sacramento 95822. Meetings: 4th Tuesday, October-April, 7:30 p.m., Studio Theater, 1028 "R" Street, Sacramento

SAN DIEGO CAMELLIA SOCIETY: President—Gene Snooks; Secretary—Lew Gary, 11419 Cabela Place, San Diego 92127. Meetings: 3rd Wednesday, November-April, 7:30 p.m., Room 101 Casa del Prado, Balboa Park, San Diego.

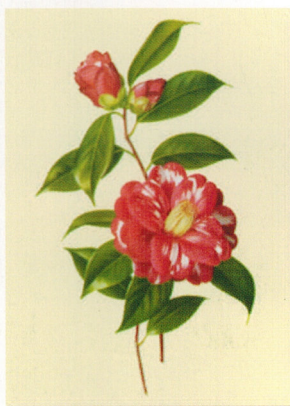
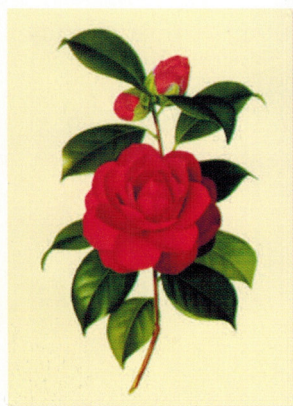
SAN FRANCISCO PENINSULA CAMELLIA SOCIETY: President—Denise Kuppeerman.; Secretary—Christina Isenberg, 240 Polhemus, Atherton, CA 94027 Meetings: 4th Monday, October-March, Veterans' Building Annex, 711 Nevada St., Rm. 20, Redwood City (formerly Peninsula Camellia Society)

SANTA CLARA COUNTY, INC., CAMELLIA SOCIETY OF: President—Kathleen Hall. Meetings: 3rd Wednesday, October-April, 7:30 p.m., Lick Mill Park, 4750 Lick Mill Boulevard, Santa Clara.

SOUTHERN CALIFORNIA CAMELLIA SOCIETY: President—Brad King; Secretary—Bobbie Belcher 40641 Via Amapola, Murrieta, CA 92562 Meetings: 7:00 p.m., Ayres Hall, Los Angeles County Arboretum, 301 Baldwin Avenue, Arcadia. Call Marilee Gray for meeting dates (909) 624-4107.



Your friends will enjoy receiving your greetings on these camellia note cards. They also make great gifts for your fellow camellia lovers or for those you are trying to get involved in this wonderful hobby! Cards and matching envelopes are packaged in sets of 8.



Order Today!